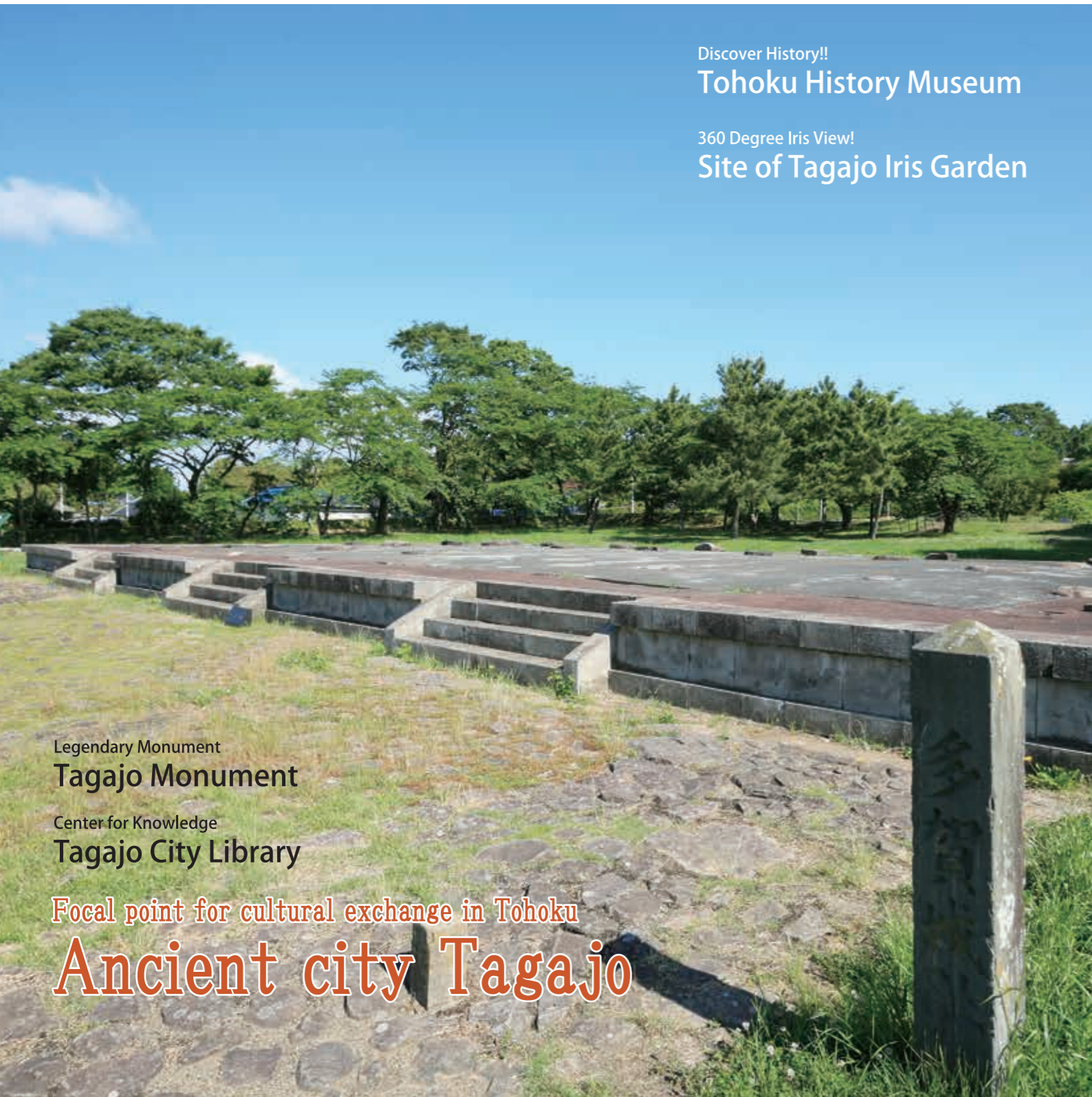


# TAGAJO

## The Historical City, Tagajo

Discover History!!  
**Tohoku History Museum**  
 360 Degree Iris View!  
**Site of Tagajo Iris Garden**



Legendary Monument  
**Tagajo Monument**

Center for Knowledge  
**Tagajo City Library**

Focal point for cultural exchange in Tohoku  
**Ancient city Tagajo**

### Recommended sightseeing course

#### ◎Tour Japan Heritage Sites

Kokufu-Tagajo Station ⇒ (walk 10 min.) ⇒ Tagajo Monument ⇒ (walk 2 min.) ⇒ Tagajo Government Office Remains ⇒ (walk 15 min.) ⇒ Mutsu Sosa-no-miya Shrine ⇒ (walk 20 min.) ⇒ Tohoku History Museum ⇒ (walk 10 min.) ⇒ Tagajo Temple Remains ⇒ (walk 10 min.) ⇒ Kokufu-Tagajo Station

#### ◎Walk Shioigama Road

Rikuzen-Sanno Station ⇒ (walk 15 min.) ⇒ Fuseishi ⇒ (walk 1 min.) ⇒ Kifune Shrine ⇒ (walk 1 min.) ⇒ Tagajo Shrine ⇒ (walk 2 min.) ⇒ Tagajo Government Office Remains ⇒ (walk 5 min.) ⇒ Taga Shrine ⇒ (walk 3 min.) ⇒ Koteikigohyo ⇒ Head to Shioigama

#### ◎Trace History and Culture

Tagajo Station ⇒ (walk 15 min.) ⇒ Omowaku-no-Hashi/Noda-no-Tamagawa ⇒ (walk 15 min.) ⇒ Tagajo History Museum Ancient History Experience (Buried Cultural Property Survey Center Exhibition Hall) ⇒ (walk 10 min.) ⇒ Tagajo City Library ⇒ (walk 1 min.) ⇒ Tagajo Station

#### ◎See Recovery from Great East Japan Earthquake

Tagajo Station ⇒ (walk 1 min.) ⇒ Tagajo City Library ⇒ (walk 1 min.) ⇒ Tagajo City East Japan Earthquake Monument ⇒ (walk 10 min.) ⇒ Sue-no-Matsuyama/Oki-no-i ⇒ (walk 15 min.) ⇒ Experience making handmade kamaboko at the San Mirai Tagajo Reconstruction Complex inside Matsushima Kamaboko Hongo Tagajo Factory ⇒ (walk 15 min.) ⇒ Nakanosakae Station  
 \*Within the tsunami flood area, "Tsunami reached sign" are placed on utility poles by local high school students.

### Tourist Association members

#### Taxi Companies

- Tagajo Kotsu Tel.022(362)0165
- Shinko Taxi Tel.022(364)3355
- Shioigama Toko Taxi Tel.022(362)6760

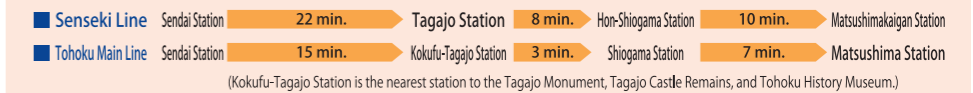
#### Chartered Bus

- Senen Kotsu  
 2-2-5, Machimae, Tagajo City Tel.022(366)5666

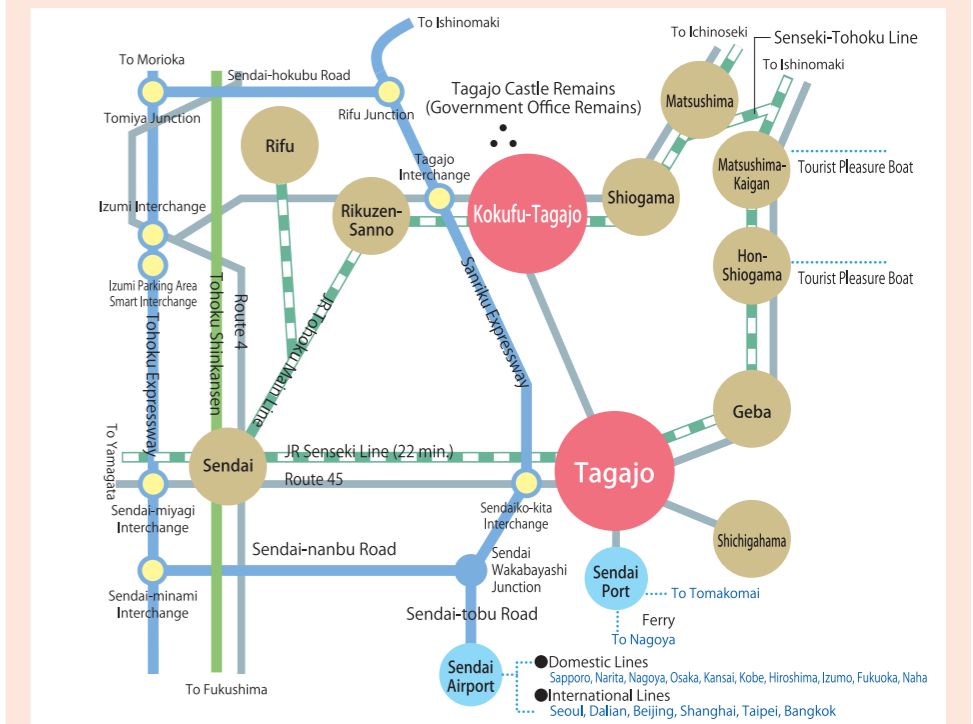
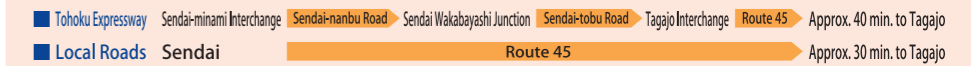
#### Accommodation

- Hotel Castle Plaza Tagajo  
 1-1-60, Sakuragi, Tagajo City Tel.022(367)1111
- Sun Hotel Tagajo  
 4-7-52, Yawata, Tagajo City Tel.022(362)3131
- Onoya Hotel  
 1-9-2, Oshiro, Tagajo City Tel.022(362)6381
- Shintomi Ryokan  
 1-1-28, Sakuragi, Tagajo City Tel.022(364)8921
- Business Inn Ohshiro ITO  
 4-6-25, Oshiro, Tagajo City Tel.022(362)6790
- Hotel Route-Inn Sendaiko Kita Inter  
 1-1-15 Machimae, Tagajo City Tel.022(361)8501
- Hotel Route-Inn Tagajo Eki Higashi  
 4-4-77, Yawata, Tagajo City Tel.050(5847)7301
- Smile Hotel Sendai Tagajo  
 1-1-8, Machimae, Tagajo City Tel.022(367)6001

### Access via the JR Line



### Access via car



### Volunteer Sightseeing Guides



Volunteer guides help visitors get a closer understanding of famous historical heritage sites such as Site of Tagajo and Tagajo Monument. Rental bicycles are also available for touring the famous sites and remains.

#### Volunteer Guides

##### ■ Reservation Guidance Times

From 8:30 a.m. to 5 p.m. every day except during New Year holidays and Obon holidays in August.

##### ■ Guide Fees

The guide service is free (except for tour groups). However, any expenses such as facility entry fees for guide are needed.

##### ■ How to Reserve a Guide

Contact the Historical Tagajo Tourist Information Center (inside Tagajo Station on the JR Senseki Line) by telephone or fax ten or more days before the requested date for the guide. The information center will contact you with details on the reservation a couple of days later.

#### Rental Bicycles

##### ■ Fees

100 yen per hour. However, a deposit of 1,000 yen is required when borrowing the bicycle (the deposit is refunded when the bicycle is returned).

##### ■ Rental Location and Use Times

◎ Historical Tagajo Tourist Information Center (inside Tagajo Station on the JR Senseki Line)  
 9:00 a.m. – 4:30 p.m.  
 \*For details, see the website

### Tagajo City

2-1-1 Chuo, Tagajo City, Miyagi Prefecture 985-8531 TEL 022-368-1141 (Main Line)  
 Tagajo Citizen Culture Creation Section ©e-mail: kanko@city.tagajo.miyagi.jp

### Tagajo City Tourist Association – Historical Tagajo Tourist Information Center

Tagajo City Tourist Association

#### 【Inside Tagajo Station on the JR Senseki Line】

2-7-1 Chuo, Tagajo City, Miyagi Prefecture 985-0873 TEL 022-364-5901 FAX 022-364-9905 Operating Hours: 9:00 a.m. – 5:00 p.m.  
 \*For details, see the website.

#### 【Kokufu-Tagajo Station North Side on the JR Tohoku Main Line】

1-9-22 Ukijima, Tagajo City, Miyagi Prefecture 985-0861 Open Hours: 10:00 a.m. – 3:00 p.m. (closed 12 noon – 1:00 p.m.) \*Also closed every Monday (except Holiday Mondays), Obon holidays (in August), New Year holidays, and January to February.

「宮城国際観光テーマ地区」

City Website



Association Website





Winter



### Tagajo Monument (Tsubo-no-Ishibumi)

Located inside a protective hut, the monument was erected in the year 762, facing west, with an inscription of 141 characters. The inscription gives the distance from the ancient capital to Tagajo, noting that it was built by Ono-no-Azumahito and renovated by Fujiwara-no-Asakari. It is one of the three oldest monuments in Japan and is also known for its late-12th century waka poems by Saigyō and Minamoto-no-Yoritomo. When the monument was discovered in the early 17th century, it was given the name "Tsubo-no-Ishibumi," and Matsuo Bashō wrote in his well-known travelogue "Narrow Road to Oku" of his moving experience upon seeing it.

(National Important Cultural Properties, National Scenic Spot, Japanese Heritage)



Summer

## Historical City Tagajo

Site of Tagajo is one of Japan's three major historical remains along with the Heijo Palace Remains in Nara and the Dazaifu Remains in Fukuoka. In ancient times, Tagajo was a political and cultural center for Tohoku. Today, historical sites comprise about one-quarter of the city's total area.

### Focal point for cultural exchange in Tohoku

1,300 years ago, Tagajo was not only a center for politics and military, but also a center for culture in Tohoku region. Even now, with the cultural facilities such as Tohoku History Museum and the city library opened in March 2016, Tagajo is aiming to become a focal point for cultural exchange in Tohoku.

### Rediscover!! Matsushima Bay Wonderland

Cities and Towns surrounding the Matsushima Bay have been working on region-wide tourism. Tagajo is located between Matsushima, one of Japan's three best-known views, and Sendai, called as City of Tree. Therefore Tagajo is an ideal location to travel around this area.



#### Tagajo City

Population: 62,066 people (as of March 1, 2022)

Area: 19.69 km<sup>2</sup>

Tagajo City is located near the middle of Miyagi Prefecture in the Tohoku region, on the Pacific sea coast. Nearby is the prefectural capital, Sendai, and Shiohama City, which is known for its fishing port, and Matsushima, where is one of Japan's three most famous views. The geography of the city is elongated from east to west, and the Sunaoshi River splits it in two down the middle.

In addition, it has many historical remains in its east and north areas, a flat area near the ocean to the south which is part of an industrial belt, and many fields and paddies in the flat land to the west.

#### Site of Tagajo

(Government Office Remains)

Measuring approximately 100 meters square at the center of the 900 meters square Site of Tagajo are the Government Office Remains that played an important role in ancient times both politically and ceremonially. The Mutsu provincial capital was also located here, and Kyoto aristocrats of the Heian period longed to visit the beautiful area known as Michinoku. Many officials and poets composed poems here.

(Special historic site / Japanese heritage)



## Historical City

### What is Tagajo?

Approximately 1,300 years ago in the Nara period, a government office was established in this area in order to extend the government's reach to Michinoku province. In 724, Ono-no-Azumahito built it on a hill so the entire Sendai Plain could be seen. The Kokufu, the administrative organization of that time, and the Guardian Office for supervising and garrisoning the military were established, and people such as the famous poet and statesman Otomo-no-Yakamochi, and the shogun Sakanoue-no-Tamuramaro took office there, and it flourished as a center for politics, military, and culture in Tohoku.

#### Tagajo Monument



西

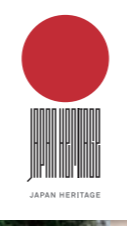
多賀城 京を去ること千五百里  
蝦夷國の界を去ること二百千里  
常陸國の界を去ること四百一十二里  
下野國の界を去ること二百七十四里  
蘇我國の界を去ること二十里  
此城は、神龜元年、廣は甲子に次る。按察使兼鎮守持軍從四位上、熱四等大野朝臣東人の置く所也。天平宝字六年、歲は壬寅に次る。參議東海東山節度使從四位上、仁部省御兼按察使鎮守將軍藤原惠美朝臣朝獨、修造する也。  
天平宝字六年十一月日

#### Sue-no-Matsuyama

Sue-no Matsuyama is one of Utamakura in Tagajo where many love-themed poems have been written. Located on the hill behind Hokokuji Temple in Yawata, even now, the pine trees grow tall, hearkening back to ancient times. Famed poet Matsuo Bashō visited this place during his journey in "Narrow Road to Oku".

(National Scenic Spot, Japanese Heritage)

らざりきなかたみに  
そまをしばりつ  
すゑのまつ山なみこさじとは  
後拾遺和歌集 清原元輔



#### Okino-i (Oki-no-Ishi)

To the south of Sue-no-Matsuyama, in a corner of a residential area, there is a pond with a large rocky outcropping in the middle. During the Edo period, the Sendai clan assigned a custodian to protect it, and it has been cared for carefully to the present day, where even now local people protect the tradition.

(National Scenic Spot / Japanese Heritage)

わが袖は  
汐子に見えぬ沖の石の  
人こそ知らぬ乾くまもなし  
小金百人一首 二条院蹟岐



## Poetic Land, Tagajo



#### Matsuo Bashō travelling in Michinoku

(the picture is by painter and poet Boson)

The government officials who were sent to Tagajo from the capital during the Nara and Heian periods wrote poems to express the local natural beauty. These poems built Tagajo's reputation among the people in the capital. The locations described in these poems are called "Utamakura" and well-known nationwide. During Edo period, these Utamakura were preserved carefully by poets and Sendai feudal lord.

Matsuo Bashō visited Tsubo-no-Ishibumi, one of Utamakura in Tagajo, during his journey known as "Narrow Road to Oku", and it is said that he was so moved and almost crying to be there.

#### Tagajo Temple Remains

Located 1 km to the southeast of the government office remains and built in the beginning of the Nara period. The placement of temple buildings is the same as Kanzeonji Temple in Dazaifu (Fukuoka prefecture). Currently, it is a historical remains park.

(Special historic site / Japanese heritage)



#### Reki-Navi Tagajo



#### Smartphone App Reki-Navi Tagajo

Open the Reki-Navi Tagajo app at the Tagajo Government Office Remains, and the Tagajo Temple Remains to see VR AR of how the buildings would have looked and Matsuo Bashō, and see explanations of the many cultural assets around the city. Download it from the Apple App Store or Google Play.

Available in: Japanese, English, Traditional Chinese, Simplified Chinese, and Korean.

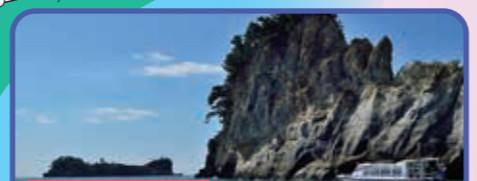
The three cities and three towns surrounding Matsushima Bay (Shiogama, Tagajo, Higashi Matsushima, Matsushima, Shichigahama, and Rifu) together with Miyagi prefecture joined "Most Beautiful Bays of the World Club" and have begun work to make this area more attractive and provide better experiences to sightseeing visitors.

The areas around Matsushima Bay are full of appeal, including beautiful nature such as the four major viewpoints for Matsushima Bay, history that can be found through historical remains, delicious food such as oysters, tuna, nori seaweed, and Rifu pears, and fun experiences that allow visitors to fully experience all of the above.



**Rifu, Tagajo Kasenuma Park**

To the north of the Tagajo Castle Remains is a swamp of about 4km in diameter, and in the Edo period, this was made into a reservoir for irrigating rice paddies. Today, it has been made into a park, and visitors can enjoy fishing and picnics through the four seasons. It was chosen as one of Japan's 100 most scenic reservoirs by the Ministry of Agriculture, Forestry, and Fisheries.



**Higashi Matsushima Sagakei Pleasure Boat**

Together with Geibikei in Iwate prefecture, and Yabakei in Oita prefecture, Sagakei is one of Japan's three major gorges. The wind, rain, and rough waves of the Pacific Ocean carved out the cliffs to create a wild and masculine rock formation to offset the feminine beauty of Matsushima Bay, giving visitors countless breathtaking moments.



**Matsushima Zuiganji Temple**

The official name for this temple is "Shoto-Seiryuzan-Zuigan-Enpukuzenji". It is a Zen temple from the Rinzaishu Myoshinji sect. In 1609, Date Masamune spent five years to build the temple, and it became the family temple for the Date clan. Seven buildings on the site including the main building and the temple kitchen, are designated National Important Cultural Properties.



**Shiogama Shiwahiko Shrine, Shiogama Shrine**

As Mutsunokuni Ichinomiya, the shrines boast over 1,200 years of history, and the 14 buildings under the main building are designated National Important Cultural Properties. The Shiogama Sakura cherry blossoms that bloom within the shrine grounds are nationally designated natural monuments, and the 202-step stone stairs that lead to the shrine are a popular place to take pictures when the cherry blossoms are in season.



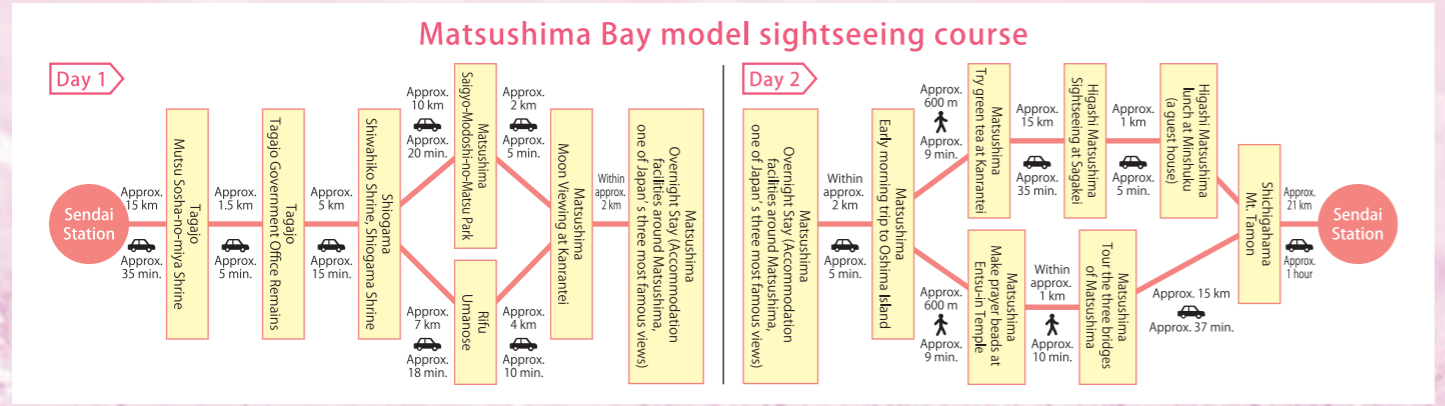
**Shichigahama Mt. Tamon**

At a height of 56m, Mt. Tamon is a viewpoint for Hachigamori, and also features a statue of Tamon-ten at the Bishamon-do temple. Look down to see the islands of Matsushima Bay including Mahanashi Island and Jizo Island, which create a view that looks like a beautiful garden rock in Japanese garden. One of the four great views of Matsushima, called "Ikan" which means "tremendous view".



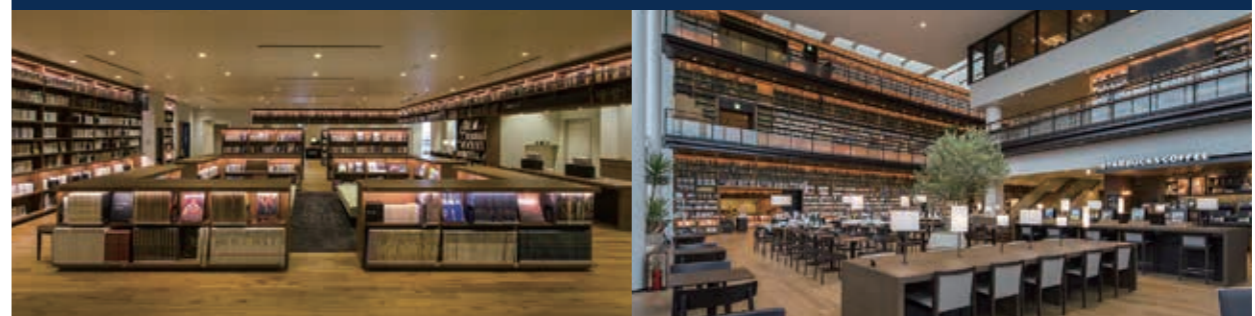
**Rifu Umanose**

This interesting geographical feature is a product of nature. The waves have carved away at the rocks to create a natural bridge, in an interesting shape that could not be made by humans. It looks like the strong back of a horse, hence the name "Umanose" which means "horse's back".



# Tagajo City Library

This city library opened in March, 2016. The concept is "HOME" which has comfortable atmosphere and environment that makes everyone feel welcome. Each floor has its own function based on users' purpose, like the floor for people who want to sit quietly and read, or who want to use the library on a casual basis, and this style is well-loved by users. Open hours: 9:00 a.m. to 9:30 p.m., open every day year-round.



### Tagajo Local Specialty

**Ancient Rice Variety, Shiro-no-Murasaki**

In January of 2016, the Tagajo City Tourist Association announced a Tagajo gourmet brand called Shiro-no-Murasaki, which uses an ancient rice variety. Compared to ordinary rice, ancient rice is high in nutrients such as minerals and polyphenol, making it an excellent food to maintain beauty and health. A list of shops carrying the brand can be found on the Tagajo City Tourist Association website.

### Tagajo Manyo Digital Museum

The Tagajo Manyo Digital Museum is a digital archive of paintings of the late Tsuneyoshi Kusaka, donated to Tagajo City, especially those related to Tagajo and Manyo culture. The website allows visitors to experience the ancient literary culture of Manyo and the historical heritage of Tagajo. We invite you to experience the never-before-seen "World of Manyo in Historical Tagajo."

Note: Paintings are exhibited on an irregular schedule at the municipal library in the art gallery on the third floor.

### Site of Tagajo Iris Garden

Located in one corner of Site of Tagajo, 3 million bulbs of 800 types of irises bloom, delighting the eyes of citizens and tourists alike. Site of Tagajo Iris Festival is held when the flowers are in season.

Site of Tagajo Iris Festival is held from mid-June to late June every year.

### Tohoku History Museum

This history museum looks at the entire Tohoku region. Displays focus on history from the Stone Age to the present day, featuring video screenings, reconstructed and replicated buildings, as well as many aspects of traditional Tohoku culture.

- Open Hours: 9:30am – 5:00pm (Entry until 4:30pm)
- Entry Fee: Individual Adults: 460 yen, Elem. Jr. & Sr. High School Students: Free
- Group Adults: 360 yen \*20 people or more
- Closed: Mondays (open on holiday Mondays and closed the following day), New Year Holidays
- TEL 022-368-0106

Focal Point for Cultural Exchange in Tohoku

Picture-perfect locations  
**Shrines and Temples**

Shrines and temples dot the city. Among them, the following three places are ideal locations to soak up the changing of the seasons. The landscape changes depending on the season and time of day, which means visitors see a new spectacular view on every visit.



**1** Mutsu Sosha-no-miya Shrine

This shrine is the place where the gods of 100 shrines in the province of Michinoku were brought together. There are magnolia trees over 200 years old and cedar trees over 600 years old within the shrine grounds.



**2** Kifune Shrine

Located in the dense forest on the old Shiogama road, 400 year-old oak trees spread their branches to envelop the shrine building.



**3** Nangu Shrine

Located in the middle of vast rice paddies and surrounded by a small sacred forest. Nangu is a land that can trace its name back to the Kamakura period.

◆Addresses for Each Facility

Historical Tagajo Tourist Information Center (Tourism Association Bureau)	2-7-1 Chuo, Tagajo City
Kokufu-Tagajo Station Historical Tagajo Tourist Information Center	1-9-22 Ukishima, Tagajo City
Site of Tagajo (Government Office Remains)	Jomae, Ichikawa, Tagajo City
Tagajo Temple site	1 chome, Takasaki, Tagajo City
Tagajo Monument (Tsubo-no-Ishibumi)	Tayaba, Ichikawa, Tagajo City
Sue-no-Matsuyama	2 chome, Yawata, Tagajo City
Oki-no-i	2 chome, Yawata, Tagajo City
Noda-no-Tamagawa	3 chome, Tomegaya, Tagajo City
Omowaku-no-Hashi	Chuo, Tagajo City
Tagajo City Library	2-4-3 Chuo, Tagajo City
Tohoku History Museum	1-22-1 Takasaki, Tagajo City
Site of Tagajo Iris Garden	Tateishi, Ichikawa, Tagajo City
Kasenuma Park	7-1 Shin Tsutsumishita, Kase, Rifu-cho
Tagajo History Museum (Tagajo City Buried Cultural Property Survey Center Experience Hall)	2-25-5 Chuo, Tagajo City
Mutsu Sosha-no-miya Shrine	1 Sosha, Ichikawa, Tagajo City
Kifune Shrine	Kanabori Ichikawa, Tagajo City
Nangu Shrine	Ironochi, Nangu, Tagajo City
Tagajo City Buried Cultural Property Survey Center Exhibition Hall	2-27-1 Chuo, Tagajo City



# Tagajo Historical City Guide

The ancient city, Tagajo.

From the footprints of countless officials and literati, this area was once the largest city in Tohoku.

As a place people long for and far from the capital, it made them a deep impression.

Walk through Tagajo today, and the whispers of people from ancient times can be heard all around.



**4** Tagajo History Museum

At the permanent exhibition room, see the history of Tagajo City from the Jomon to the Edo period, and learn about farming during the Showa period. In the experiential learning room, try making things like magatama beads and Jomon-style baskets (some require a fee).  
TEL 022-368-3127, 9:00 a.m. – 4:30 p.m.  
Closed: Mondays, the day after national holidays, New Year holidays



**5** Buried Cultural Property Survey Center Exhibition Hall

The permanent exhibition, "Ancient City Tagajo" features an introduction to ancient Tagajo based on materials found via archaeological digs.  
TEL 022-368-0134, 9:00 a.m. to 4:30 p.m.  
Closed: Mondays, the day after national holidays, New Year holidays