

# 10. 新設住宅着工量

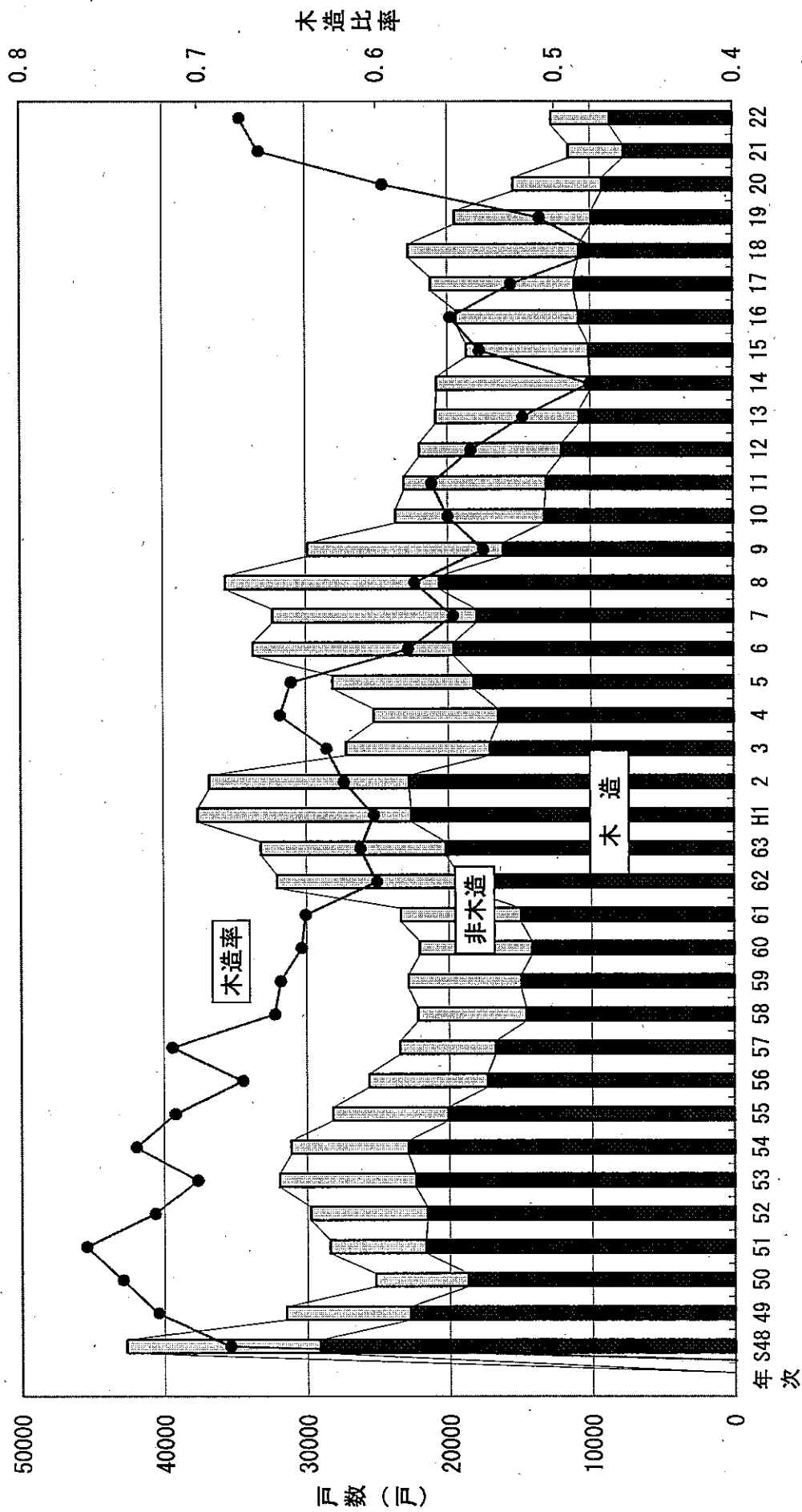
## (1) 構造別着工量の推移

単位：戸，千m<sup>2</sup>

年次	総数		木造		非木造		木造率 %
	戸数	床面積	戸数	床面積	戸数	床面積	
S48	42,691	3,495	29,162	—	13,529	—	68.3%
49	31,482	2,564	22,781	—	8,701	—	72.4%
50	25,208	2,236	18,741	—	6,467	—	74.3%
51	28,396	2,439	21,685	—	6,711	—	76.4%
52	29,748	2,495	21,576	1,941	8,172	554	72.5%
53	31,920	2,984	22,379	2,295	9,541	689	70.1%
54	31,105	2,973	22,885	2,313	8,220	660	73.6%
55	28,184	2,634	20,117	2,031	8,067	603	71.4%
56	25,625	2,386	17,315	1,744	8,310	642	67.6%
57	23,440	2,228	16,767	1,698	6,673	530	71.5%
58	22,165	1,979	14,581	1,444	7,584	535	65.8%
59	22,848	1,935	14,956	1,418	7,892	517	65.5%
60	22,051	1,900	14,173	1,380	7,878	520	64.3%
61	23,374	1,999	14,970	1,424	8,404	575	64.0%
62	32,046	2,588	19,236	1,830	12,810	758	60.0%
63	33,161	2,575	20,216	1,828	12,945	747	61.0%
H1	37,552	3,000	22,600	2,022	14,952	978	60.2%
2	36,775	3,026	22,753	2,048	14,022	978	61.9%
3	27,193	2,553	17,088	1,793	10,105	760	62.8%
4	25,230	2,468	16,514	1,816	8,716	652	65.5%
5	28,115	2,725	18,226	1,987	9,889	738	64.8%
6	33,659	3,142	19,602	2,113	14,057	1,029	58.2%
7	32,306	2,898	18,001	1,899	14,305	999	55.7%
8	35,594	3,348	20,597	2,287	14,997	1,061	57.9%
9	29,852	2,641	16,124	1,698	13,728	943	54.0%
10	23,649	2,145	13,243	1,412	10,406	733	56.0%
11	23,067	2,282	13,126	1,509	9,941	774	56.9%
12	21,979	2,195	12,025	1,418	9,954	777	54.7%
13	20,831	2,016	10,787	1,234	10,044	782	51.8%
14	20,776	1,915	9,982	1,140	10,794	775	48.0%
15	18,677	1,794	10,125	1,159	8,552	635	54.2%
16	19,382	1,828	10,824	1,197	8,558	631	55.8%
17	21,171	1,830	11,106	1,143	10,065	686	52.5%
18	22,742	1,883	10,785	1,125	11,957	759	47.4%
19	19,471	1,687	9,896	979	9,575	708	50.8%
20	15,375	1,425	9,168	937	6,207	488	59.6%
21	11,495	1,075	7,650	781	3,845	293	66.6%
22	12,714	1,218	8,599	898	4,115	320	67.6%

出典：住宅着工統計（国土交通省）

# 構造別住宅工数および木造率の推移



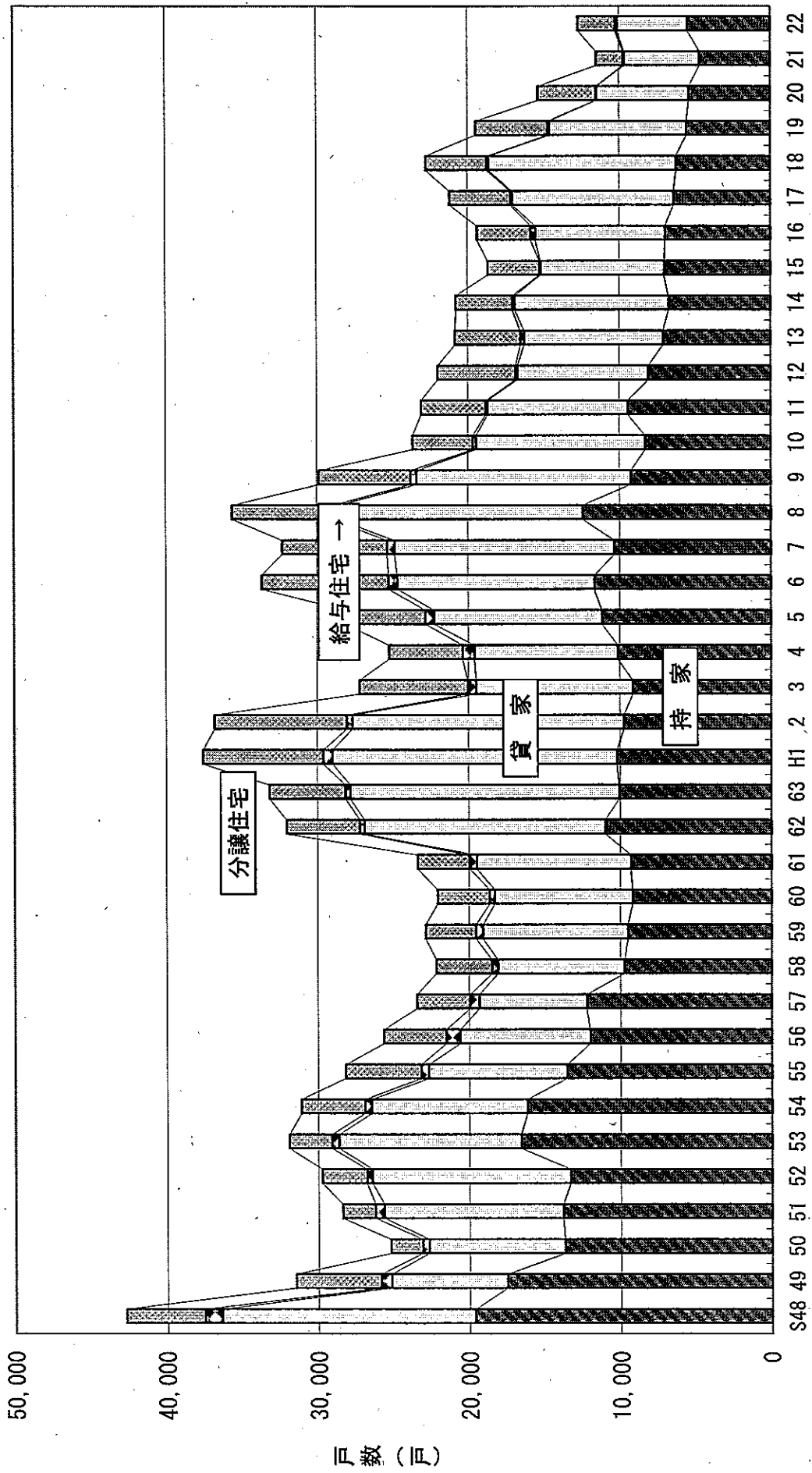
(2) 利用関係別・資金別着工戸数の推移

単位：戸

年次	総数	利		用		関		係		別		資	
		持家		貸家		木造		給与住宅		分譲住宅		民間	
		木造	木造	木造	木造	木造	木造	木造	木造	木造	木造	木造	木造
S48	42,691	19,633	—	16,743	—	1,138	—	5,177	—	33,020	9,671		
49	31,482	17,525	—	7,630	—	681	—	5,646	—	23,157	8,325		
50	25,208	13,703	—	8,948	—	442	—	2,115	—	18,370	6,838		
51	28,396	13,834	—	11,799	—	570	—	2,193	—	22,034	6,362		
52	29,748	13,323	12,251	13,076	7,022	384	128	2,965	2,175	22,407	7,341		
53	31,920	16,591	15,105	12,032	4,837	473	168	2,824	2,269	20,117	11,803		
54	31,105	16,188	14,619	10,271	5,235	450	149	4,196	2,882	18,969	12,136		
55	28,184	13,536	12,316	9,138	4,413	498	137	5,012	3,251	16,309	11,875		
56	25,625	12,018	10,770	8,584	3,915	913	101	4,110	2,529	14,232	11,393		
57	23,440	12,226	10,841	7,108	3,689	623	108	3,483	2,132	12,196	11,244		
58	22,165	9,722	8,500	8,390	3,634	383	99	3,670	2,348	12,008	10,157		
59	22,848	9,515	8,364	9,566	4,560	469	106	3,298	1,926	15,064	7,784		
60	22,051	9,188	8,171	9,113	4,313	338	176	3,412	1,519	14,677	7,374		
61	23,374	9,302	8,168	10,182	4,872	471	84	3,419	1,864	15,447	7,927		
62	32,046	10,990	9,720	15,895	7,189	323	112	4,838	2,215	22,153	9,893		
63	33,161	10,059	8,733	17,775	8,409	323	100	5,004	2,974	22,378	10,783		
H1	37,552	10,184	8,870	18,805	10,027	625	75	7,938	3,628	24,915	12,637		
2	36,775	9,737	8,425	17,945	10,468	362	91	8,731	3,769	24,854	11,921		
3	27,193	9,151	7,881	10,336	5,669	547	177	7,159	3,361	16,331	10,862		
4	25,230	10,131	8,772	9,473	4,957	761	166	4,865	2,619	12,950	12,280		
5	28,115	11,176	9,671	11,061	5,657	575	177	5,303	2,721	13,540	14,575		
6	33,659	11,672	10,027	12,988	6,512	607	90	8,392	2,973	15,712	17,947		
7	32,306	10,332	8,844	14,515	6,377	502	91	6,957	2,699	18,272	14,034		
8	35,594	12,453	10,666	16,128	6,872	392	89	6,621	2,970	23,157	14,474		
9	29,852	9,252	7,859	14,139	6,075	401	87	6,060	2,103	18,359	11,493		
10	23,649	8,307	7,113	11,168	4,751	204	33	3,970	1,346	15,216	8,433		
11	23,067	9,439	7,968	9,265	3,657	114	46	4,249	1,456	13,200	9,867		
12	21,979	8,088	6,941	8,635	3,360	117	7	5,139	1,717	14,485	7,494		
13	20,831	7,102	6,068	9,172	3,307	255	21	4,302	1,391	15,622	5,209		
14	20,776	6,744	5,812	10,152	3,043	143	46	3,737	1,081	16,827	3,359		
15	18,677	7,025	6,023	8,159	2,855	78	46	3,415	1,201	15,439	3,238		
16	19,382	6,969	5,925	8,568	3,218	304	76	3,541	1,605	16,636	2,746		
17	21,171	6,409	5,504	10,651	3,947	120	49	3,991	1,606	18,404	2,767		
18	22,742	6,245	5,409	12,384	3,622	113	61	4,000	1,693	20,694	2,048		
19	19,471	5,561	4,729	9,020	3,440	134	32	4,756	1,695	17,195	2,276		
20	15,375	5,409	4,689	6,061	2,899	55	3	3,850	1,577	13,694	1,681		
21	11,495	4,689	4,023	4,962	2,505	69	29	1,775	1,093	9,877	1,618		
22	12,714	5,487	4,681	4,645	2,365	108	10	2,474	1,543	10,782	1,932		

出典：住宅着工統計（国土交通省）

# 利用関係別新設住宅着工数の推移



(3) 都市別着工数の推移

年次	総戸数	郡部	市部	仙台	石巻	塩釜	旧古川	気仙沼	白石	名取	角田	多賀城	旧泉	岩沼	登米	栗原	東松島	大崎	市部比率 (%)
48	42,691	10,851	31,840	19,914	1,864	1,151	1,048	957	588	871	427	929	3,648	443					
49	31,482	8,991	22,491	14,143	1,471	667	809	689	462	640	391	781	2,076	362					71.4%
50	25,208	7,576	17,632	10,666	1,315	735	576	705	447	535	292	643	1,378	340					69.9%
51	28,396	7,838	20,558	11,874	1,773	854	688	834	329	688	337	711	1,956	514					72.4%
52	29,748	7,656	22,092	13,278	1,987	816	800	903	372	481	321	705	2,138	291					74.3%
53	31,920	8,938	22,982	13,786	1,448	913	1,104	949	449	401	310	773	2,544	305					72.0%
54	31,105	8,513	22,592	13,481	1,471	907	886	851	418	447	324	729	2,695	383					72.6%
55	28,184	8,098	20,086	11,945	1,197	700	760	744	433	422	294	804	2,323	464					71.3%
56	25,625	6,984	18,641	11,865	1,086	657	602	561	424	384	252	646	1,797	367					72.7%
57	23,440	6,227	17,213	10,006	929	591	485	529	429	518	271	677	2,486	292					73.4%
58	22,165	5,232	16,933	10,522	989	413	508	401	338	349	205	436	2,492	280					76.4%
59	22,848	5,119	17,729	11,345	1,007	447	580	345	324	341	313	518	2,235	274					77.6%
60	22,051	4,763	17,288	11,048	848	431	625	357	332	430	255	626	1,999	327					78.4%
61	23,374	4,863	18,511	11,669	984	514	757	344	318	425	228	698	2,249	325					79.2%
62	32,016	6,105	25,911	16,522	1,258	587	745	445	351	520	361	557	4,197	368					80.9%
63	33,161	5,548	27,613	20,509	1,259	592	926	435	359	782	287	944	1,096	424					83.3%
H元	37,552	6,778	30,774	23,215	1,492	848	977	537	430	1,195	335	1,196	—	459					82.0%
2	36,775	7,313	29,462	21,494	1,831	948	1,447	376	415	1,156	230	1,157	—	408					80.1%
3	27,193	6,380	20,813	14,864	827	655	1,144	425	340	1,141	272	704	—	441					76.5%
4	25,230	6,815	18,415	12,734	1,212	729	840	436	326	806	248	617	—	467					73.0%
5	28,115	7,673	20,442	13,793	1,389	549	786	443	312	1,299	286	803	—	782					72.7%
6	33,659	7,887	25,772	19,425	1,255	513	881	448	346	992	289	908	—	715					76.6%
7	32,306	7,116	25,190	19,413	1,144	585	1,053	412	369	893	254	692	—	375					78.0%
8	35,556	8,402	27,154	20,675	1,003	710	1,216	548	455	1,052	323	732	—	440					76.4%
9	29,852	6,927	22,925	17,032	859	542	1,065	399	426	922	300	742	—	638					76.8%
10	23,649	5,544	18,105	13,452	843	415	955	318	260	592	224	585	—	461					76.6%
11	23,067	5,589	17,478	12,802	894	270	820	375	251	780	188	623	—	475					75.8%
12	21,979	5,390	16,589	12,107	775	347	1,050	319	205	594	219	664	—	309					75.5%
13	20,831	5,044	15,787	11,660	618	254	779	294	266	589	194	543	—	590					75.8%
14	20,776	4,866	15,910	12,055	591	304	535	340	215	450	219	626	—	565					76.6%
15	18,677	4,555	14,122	10,290	565	253	450	228	288	430	174	772	—	672					75.6%
16	19,382	4,853	14,529	10,903	549	276	618	226	215	594	157	454	—	537					75.0%
17	21,171	4,185	16,986	12,904	773	303	573	174	178	651	356	652	—	422					80.2%
18	22,742	2,951	19,791	14,937	1,000	260	117	142	219	544	123	691	—	393	285	191	285	604	87.0%
19	19,471	2,371	17,100	12,502	791	233	—	120	147	955	118	557	—	324	257	188	208	700	87.0%
20	15,375	3,164	12,211	8,070	572	209	—	129	125	1,113	91	345	—	248	268	198	141	702	79.4%
21	11,495	2,039	9,456	5,870	635	116	—	134	119	844	112	316	—	178	224	222	155	531	82.3%
22	12,714	2,192	10,522	6,236	832	177	—	145	174	706	130	365	—	237	288	259	150	823	82.8%

出典：住宅着工統計（国土交通省）

市部・郡部別新設住宅工数の推移

